

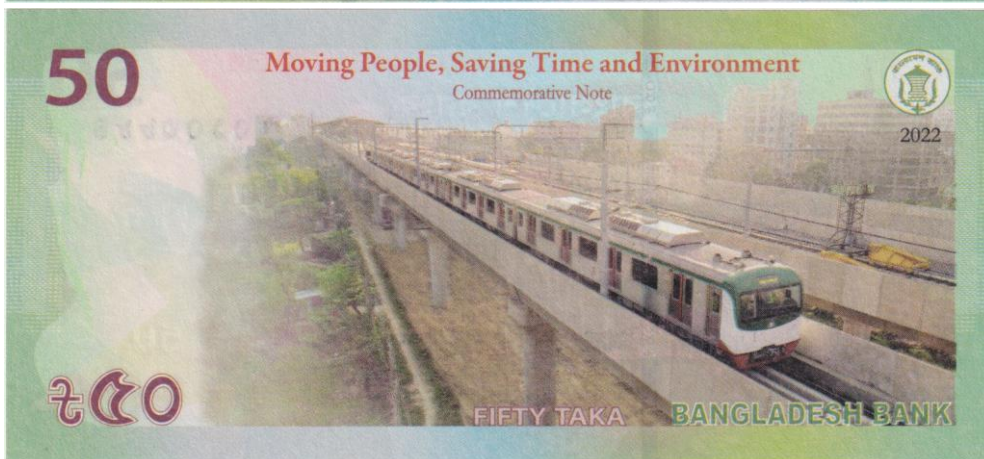
Metro Themed Coins, Banknotes, Medals and Tokens

Official Coins and Banknotes.....	2
Bangladesh.....	2
Egypt.....	3
France.....	3
Germany.....	4
Great Britain.....	4
Liberia.....	4
Mongolia.....	5
Niue.....	5
Russia.....	5
Singapore.....	6
Turkey.....	6
Zambia.....	7
Commemorative Coins and Medals.....	8
Canada.....	8
Czechia.....	8
Hungary.....	8
Germany.....	9
Great Britain.....	12
Greece.....	13
Hong Kong.....	14
Mexico.....	14
USA.....	15
Tokens.....	16
Argentina.....	16
Armenia.....	17
Australia.....	18
Azerbaijan.....	18
Belarus.....	19
Brasilia.....	21
Canada.....	21
Chile.....	24
China.....	24
Georgia.....	45
Germany.....	46
Great Britain.....	48
India.....	48
Israel.....	50
Italy.....	50
Kazakhstan.....	51
Malaysia.....	51
Mexico.....	53
Philippines.....	54
Russia.....	54
South Korea.....	61
Taiwan.....	68
Thailand.....	79
Turkey.....	80
Ukraine.....	82
USA.....	94
Uzbekistan.....	101
Venezuela.....	104

Official Coins and Banknotes

Bangladesh

2022 Inauguration of MRT Line 6



50 Taka

60,0 x 130,0 mm 0,0 mm 0,8 g paper

Egypt

1987 Opening of Cairo Metro



5 Pounds

🌀 37,2 mm 🌀 1,8 mm 🍷 17,6 g 🍷 720er silver

1989 Opening of Cairo Metro



20 Piastres

🌀 27,0 mm 🌀 1,3 mm 🍷 6,0 g 🍷 copper-nickel

1999 Metro Tunnel under Nile



1 Pound

🌀 24,0 mm 🌀 ? mm 🍷 8,0 g 🍷 875er gold

5 Pounds

🌀 37,0 mm 🌀 2,0 mm 🍷 17,5 g 🍷 900er silver

France

1998 VAL, Metro of Toulouse



2 Euros

🌀 30,0 mm 🌀 1,9 mm 🍷 11,0 g 🍷 copper-nickel

Germany

2002 100 Jahre U-Bahn



10 Euros

🌀 32,5 mm 🌀 2,2 mm 🌀 18,0 g 🌀 925er silver

Great Britain

2013 150th Anniversary of London Underground



2 Pounds London Underground Train

2 Pounds London Underground Logo

🌀 28,4 mm 🌀 2,5 mm 🌀 12,0 g 🌀 900er bimetallic: copper-nickel centre in nickel-brass ring

Liberia

1999 International Postage Stamp Exhibition



5 Dollars Karlsplatz Station

🌀 38,0 mm 🌀 3,3 mm 🌀 29,0 g 🌀 copper-nickel

Mongolia

2007 Mytishichinsky Carriage Works



250 Tögrög

🌀 33,0 mm 🌀 2,3 mm 🍷 15,5 g 🍷 999er silver

Niue

2010 Soviet Transport - Metro



2 Dollars

🌀 40,7 mm 🌀 2,3 mm 🍷 31,1 g 🍷 999er silver

Russia

2005 Metro Station „Kropotkinskaya“ Moscow



3 Rubles

🌀 39,0 mm 🌀 3,3 mm 🍷 33,94 g 🍷 925er silver

2020 Moscow Metro



1 Ruble

🌀 25,0 mm 🌀 2,2 mm 🍷 8,53 g 🍷 925er silver

Singapore

1989 Mass Rapid Transit



5 Dollars

 38,8 mm  2,5 mm  20,3 g  copper-nickel

5 Dollars

 38,8 mm  2,5 mm  21,6 g  925er silver

Turkey

1989 Istanbul Metro



20000 Lira

 38,6 mm  2,3 mm  23,0 g  925er silver

Zambia

1998 Taipei Metro



2000 Kwacha

🌀 32,0 mm 🌀 1,8 mm 🌀 15,6 g 🌀 999er silver

4000 Kwacha

🌀 38,7 mm 🌀 2,5 mm 🌀 31,1 g 🌀 999er silver, natural golden yellow diamond

Commemorative Coins and Medals

Canada

1986 Opening Vancouver Skytrain



Commemorative coin by BC Transit

🌀 26,0 mm 🌀 2,0 mm 🌀 10,0 g 🌀 bronze

Czechia

2014 40 Years Prague Metro



Medal

🌀 37,0 mm 🌀 3,0 mm 🌀 31,2 g 🌀 copper

Hungary

2021 125 Years Budapest Millennium Underground Railway



2000 Forint Medal

🌀 39,6 x 26,4 mm 🌀 3,2 mm 🌀 26,8 g 🌀 copper-nickel

Germany

1972 Nürnberg U-Bahn-Eröffnung



Medal

45,0 mm 3,5 mm 49,5 g silver

1978 Erste Fahrt der U-Bahn in die Altstadt



Medal by City of Nuremberg

42,0 mm 2,4 mm 29,0 g 1000er silver

1979 50 Jahre BVG



Medal

40,0 mm ? mm 23,0 g silver

1980 Nürnberg U-Bahn-Eröffnung - Fürther Str.



Medal

20,5 mm 1,4 mm 2,7 g tin

Medal

20,5 mm 1,4 mm 4,0 g silver

1981 100 Jahre Stadtverkehr in Nürnberg und Fürth



Medal by Stadtsparkasse Nürnberg

🌀 42,1 mm 🌀 2,6 mm 🏆 29,0 g 🥈 1000er silver

1982 U-Bahn in Fürth



Medail by Medaillenkunst

🌀 35,2 mm 🌀 1,6 mm 🏆 15,85 g 🥈 silver

1983 U-Bahn Nürnberg-Fürth – Endhaltestelle Röthenbach



Medal by Medaillenkunst

🌀 35,2 mm 🌀 ? mm 🏆 14,92 g 🥈 silver

1984 U-Bahn Nürnberg – Eröffnung Stammlinie 2 – Plärrer-Schweinau



Medal

🌀 ? mm 🌀 ? mm 🏆 ? g 🥈 silver

1984 Berlin U-Bahn-Rathaus-Spandau



Medal

35,3 mm 2,1 mm 14,9 g 999er silver

1985 U-Bahn in Fürth - Hauptbahnhof



Medal

20,0 mm ? mm 5,02 g gold

1988 München U-Bahn-Eröffnung - Haidhausen



Medal

30,2 mm 2,2 mm 9,8 g tin

1988 Eröffnung der U-Bahn-Strecke Hauptbahnhof - Opernhaus-Plärrer



Medal by Medaillenkunst

35,2 mm 1,5 mm 14,8 g 999er silver

1998 Fürth U-Bahn-Eröffnung - Rathaus - Stadthalle



Medal by Medaillenkunst

35,3 mm 2,1 mm 15,0 g 999er silver

2002 100 Jahre U-Bahn



Medal

🌀 35,0 mm 🌀 2,2 mm 🏆 16,5 g 🥄 silver plated

2002 100 Jahre U-Bahn



Commemorative Medal to 10 Euro Coin

🌀 36,0 mm 🌀 3,0 mm 🏆 23,0 g 🥄 999er silver

Great Britain

1993 London Underground Diamond Jubilee



Commemorative Coin by London Underground

🌀 38,0 mm 🌀 3,0 mm 🏆 ? g 🥄 bronze

2008 Memories of Wartime Britain - Underground Shelters



Commemorative Coin by The Imperial War Museum

🌀 38,6 mm 🌀 2,0 mm 🏆 20,3 g 🥄 925er silver

2012 The London Underground 1863



Commemorative Coin by Windsor Mint

🌀 40,0 mm 🌀 3,0 mm 🕒 28,0 g 🍷 copper, silver plated with gold spot

2018 London Underground



Commemorative Coin by The Commemorative Coin Company

🌀 27,0 mm 🌀 2,0 mm 🕒 8,5 g 🍷 silver plated with 999er silver or gold plated with 24 carat gold

Greece

19?? Attiko Metro



Commemorative Medal

🌀 50,4 mm 🌀 4,2 mm 🕒 66,9 g 🍷 brass

1993 Attiko Metro



Commemorative Medal

🌀 59,8 mm 🌀 5,5 mm 🌀 41,1 g 🌀 aluminium

Hong Kong

1979 First Day of Subway Service



Commemorative Token

🌀 27,6 mm 🌀 2,0 mm 🌀 8,7 g 🌀 steel

Mexico

1969 Inauguration del Sistema de Transporte Colectivo de la Ciudad de Mexico



Medal

🌀 39,6 mm 🌀 2,6 mm 🌀 23,8 g 🌀 bronze

2008 20 Years Servicio de la Ciudad de Mexico



Medal

🌀 50,1 mm 🌀 3,8 mm 🍷 62,2 g 🍷 silver

USA

1987 Opening Southwest Corridor - Orange Line



Medal

🌀 38,5 mm 🌀 2,8 mm 🍷 26,5 g 🍷 brass

Tokens

Argentina

Buenos Aires



1930 to 1939

○ 21,2 mm ⬭ 1,4 mm ⚖️ 3,4 g 🪙 bronze



1962 to 1969

○ 18,4 mm ⬭ 2,5 mm ⚖️ 1,5 g 🪙 aluminium



1969 to 1974

○ 18,4 mm ⬭ 2,5 mm ⚖️ 1,5 g 🪙 aluminium



1974 to 1977

○ 20,0 mm ⬭ 2,4 mm ⚖️ 1,7 g 🪙 aluminium



1977 to 1979

○ 24,8 mm ⬭ 2,6 mm ⚖️ 2,6 g 🪙 aluminium



1979 to 1994

○ 18,4 mm ⬭ 2,4 mm ⚖️ 1,4 g 🪙 aluminium



1994 to 2000 (normal font)

○ 19,7 mm ⬭ 2,0 mm ⚖️ 1,4 g 🪙 aluminium



1994 to 2000 (bold font)

○ 19,7 mm ⬭ 2,0 mm ⚖️ 1,3 g 🪙 aluminium

Blister 1994 to 2000 Metrovias



Blister 1994 to 2000 Banca del Suquia



2000

🌀 20,0 mm 🌀 ? mm 🌀 2,0 g 🌀 yellow metal

Armenia

Yerevan



1992 (bold font, large distance at separator)

🌀 20,5 mm 🌀 1,5 mm 🌀 3,8 g 🌀 brass



1992 (thin font, large distance at separator)

🌀 20,5 mm 🌀 1,5 mm 🌀 3,9 g 🌀 brass



1992 (bold font, small distance at separator)

🌀 20,9 mm 🌀 1,5 mm 🌀 3,9 g 🌀 brass



1992 (thin font, small distance at separator)

🌀 20,9 mm 🌀 1,5 mm 🌀 4,1 g 🌀 brass



1995

🌀 25,0 mm 🌀 2,2 mm 🌀 1,0 g 🌀 plastic (transparent)



1995

🌀 25,0 mm 🌀 1,9 mm 🌀 0,8 g 🌀 plastic (orange, transparent)



late 1990s

🌀 25,0 mm 🌀 1,5 mm 🌀 0,8 g 🌀 plastic (brown)



early 2000s

🌀 23,8 mm 🌀 1,9 mm 🌀 0,9 g 🌀 plastic (black)



early 2000er

🌀 23,8 mm 🌀 1,9 mm 🌀 0,9 g 🌀 plastic (brown)



2009 and 2019

🌀 23,8 mm 🌀 1,7 mm 🌀 0,6 g 🌀 plastic (red, transparent)

Australia

Sydney



1988

🌀 27,0 mm 🌀 2,1 mm 🌀 8,2 g 🌀 copper-nickel

Azerbaijan

Baku



1992 to 1996 (small „M“)

🌀 19,8 mm 🌀 1,8 mm 🌀 4,0 g 🌀 brass



1992 to 1996 (convex font)

🌀 20,2 mm 🌀 1,2 mm 🌀 3,1 g 🌀 brass



1992 to 1996 (flat font)

🌀 20,2 mm 🌀 1,2 mm 🏺 3,0 g 🗑️ brass



1997

🌀 24,8 mm 🌀 2,0 mm 🏺 0,7 g 🗑️ plastic (blue green)



1997 (30 Years Metro Baku)

🌀 24,8 mm 🌀 2,2 mm 🏺 0,8 g 🗑️ plastic (blue)



1997 (30 Years Metro Baku)

🌀 24,8 mm 🌀 1,8 mm 🏺 0,7 g 🗑️ plastic (red)



1997 (30 Years Metro Baku)

🌀 24,8 mm 🌀 2,0 mm 🏺 0,8 g 🗑️ plastic (green)

Belarus

Minsk



1992 (small inlay, small M)

🌀 24,0 mm 🌀 2,2 mm 🏺 1,7 g 🗑️ plastic (pink)



1992 (small inlay, large M)

🌀 24,0 mm 🌀 2,1 mm 🏺 1,6 g 🗑️ plastic (pink)



1992 (small inlay, bold M)

🌀 24,0 mm 🌀 2,2 mm 🏺 1,7 g 🗑️ plastic (pink)

1992 (small inlay, round M)

24,0 mm 2,2 mm 1,7 g plastic (pink)



1992 (small inlay, small M, coin alignment)

24,0 mm 2,2 mm 1,7 g plastic (pink)



1992 (large inlay, small M)

24,0 mm 2,2 mm 1,7 g plastic (pink)



1992 (large inlay, large M)

24,0 mm 2,2 mm 1,7 g plastic (pink)

1992 (large inlay, bold M)

24,0 mm 2,2 mm 1,7 g plastic (pink)

1992 (large inlay, round M)

24,0 mm 2,2 mm 1,7 g plastic (pink)



2014 (30 Years Minsk Metro – Akademiya Navuk)

24,0 mm 2,2 mm 1,7 g plastic (pink)



2014 (30 Years Minsk Metro – Instytut Kultury)

24,0 mm 2,2 mm 1,7 g plastic (pink)



2014 (30 Years Minsk Metro – Kastychnitskaya)

24,0 mm 2,2 mm 1,7 g plastic (pink)



2014 (30 Years Minsk Metro – Maskovskaya)

24,0 mm 2,2 mm 1,7 g plastic (pink)



2014 (30 Years Minsk Metro – Park Chalyuskintsaw)
🌀 24,0 mm 🌀 2,2 mm 🧑 1,7 g 🗃️ plastic (pink)



2014 (30 Years Minsk Metro – Ploshcha Lenina)
🌀 24,0 mm 🌀 2,2 mm 🧑 1,7 g 🗃️ plastic (pink)



2014 (30 Years Minsk Metro – Ploshcha Pyerimohi)
🌀 24,0 mm 🌀 2,2 mm 🧑 1,7 g 🗃️ plastic (pink)



2014 (30 Years Minsk Metro – Ploshcha Yakuba Kolsas)
🌀 24,0 mm 🌀 2,2 mm 🧑 1,7 g 🗃️ plastic (pink)

Brasilia

São Paulo



1974
🌀 19,1 mm 🌀 1,0 mm 🧑 2,2 g 🗃️ steel

Canada

Toronto



1954 to 1966
🌀 16,4 mm 🌀 1,2 mm 🧑 0,6 g 🗃️ aluminium

Tokenstrip 1954 to 1966



Tokestrip 1954 to 1966 (Hertz)



Tokestrip 1954 to 1966 (The Pet Milk)





1954 to 1966

16,4 mm 1,2 mm 0,6 g aluminium (red enamelled)



1966

16,5 mm 1,2 mm 1,9 g brass

1966 - „First Day“ Token – Opening of Bloor-Danforth-Line February 26th 1966



1968 (Extension of Bloor-Danforth-Line to Etobicoke)

16,5 mm 1,3 mm 2,1 g brass



1968 (Extension of Bloor-Danforth-Line to Scarborough)

16,5 mm 1,3 mm 2,1 g brass



1975

16,4 mm 1,2 mm 0,6 g aluminium



1978 (with mintmark)

16,5 mm 1,2 mm 0,6 g aluminium



2006 to 2008

16,4 mm 1,3 mm 1,6 g bimetallic

Chile

Santiago de Chile



1987 (dodecagonal)

🌀 26,8 mm 🌀 1,6 mm 🏺 2,1 g 🪄 aluminium



1987

🌀 28,0 mm 🌀 2,2 mm 🏺 3,2 g 🪄 aluminium



1990

🌀 ??,0 mm 🌀 ? mm 🏺 ?? g 🪄 aluminium

China

Beijing



2000 (WC token)

🌀 25,0 mm 🌀 1,8 mm 🏺 6,7 g 🪄 steel

Changsha



2014

🌀 30,0 mm 🌀 3,0 mm 🏺 2,4 g 🪄 plastic (light blue)



2016 (Maglev)

🌀 30,0 mm 🌀 3,0 mm 🏺 2,5 g 🪄 plastic (dark green)



2022

🌀 30,0 mm 🌀 3,0 mm 🍷 2,4 g 🍷 plastic (blue)

Dongguan



2016

🌀 30,0 mm 🌀 2,2 mm 🍷 1,9 g 🍷 plastic (blue)

Foshan



2010

🌀 30,0 mm 🌀 2,0 mm 🍷 1,9 g 🍷 plastic (blue)

Fuzhou



2016

🌀 30,0 mm 🌀 3,0 mm 🍷 2,5 g 🍷 plastic (red)



2021

🌀 30,0 mm 🌀 3,0 mm 🍷 2,7 g 🍷 plastic (dark red)

Guangzhou



1997? (obverse with number)

🌀 30,0 mm 🌀 2,0 mm 🍷 1,6 g 🍷 plastic (black)

1997? (obverse with number, elder passenger)

🌀 30,0 mm 🌀 2,0 mm 🍷 1,7 g 🍷 plastic (pink)



1997? (reverse with number)

🌀 30,0 mm 🌀 2,1 mm 🧑 1,7 g 🌀 plastic (dark grey blue)



1997? (reverse with number, small font)

🌀 30,0 mm 🌀 2,1 mm 🧑 1,6 g 🌀 plastic (dark grey blue)



1997? (reverse with number)

🌀 30,0 mm 🌀 2,1 mm 🧑 1,7 g 🌀 plastic (black)



1997? (reverse with number, small font)

🌀 30,0 mm 🌀 2,1 mm 🧑 1,8 g 🌀 plastic (black)



1997? (reverse with number, elder passenger)

🌀 30,0 mm 🌀 2,0 mm 🧑 1,6 g 🌀 plastic (pink)



1999 (reverse without number)

🌀 30,0 mm 🌀 2,0 mm 🧑 1,8 g 🌀 plastic (dark green)



1999 (reverse with number, small font, two dots as separator)

🌀 30,0 mm 🌀 1,9 mm 🧑 1,8 g 🌀 plastic (dark green)



1999 (reverse with number, large font, two dots as separator)
 ⓪ 30,0 mm Ⓜ 1,9 mm ⚖ 1,8 g 🔄 plastic (dark green)



1999 (reverse with number, three dots as separator)
 ⓪ 30,0 mm Ⓜ 2,1 mm ⚖ 1,9 g 🔄 plastic (dark green)



2010er? (Guangzhou Metro Museum)
 ⓪ 30,2 mm Ⓜ 2,0 mm ⚖ 1,5 g 🔄 plastic (yellow, grey)

Guangzhou Metro Museum: Commemorative Issue 2011





2011 (Guangzhou Metro Museum: Commemorative Ticket)

⌀ 30,0 mm 2,2 mm 1,7 g plastic (yellow)



2011 (Guangzhou Metro Museum: Commemorative Ticket)

⌀ 30,0 mm 2,2 mm 1,7 g plastic (light green)



2011 (Guangzhou Metro Museum: Commemorative Ticket)

⌀ 30,0 mm 2,2 mm 1,7 g plastic (light blue)



2011 (Guangzhou Metro Museum: Commemorative Ticket)

🌀 30,0 mm 🌀 2,2 mm 🧑 1,7 g 🧑 plastic (blue)



2011 (Guangzhou Metro Museum: Commemorative Ticket)

🌀 30,0 mm 🌀 2,2 mm 🧑 1,8 g 🧑 plastic (violet)



2011 (Guangzhou Metro Museum: Commemorative Ticket)

🌀 30,0 mm 🌀 2,2 mm 🧑 1,8 g 🧑 plastic (pink)



2011 (Guangzhou Metro Museum: Commemorative Ticket)

🌀 30,0 mm 🌀 2,2 mm 🧑 1,8 g 🧑 plastic (red)



2011 (Guangzhou Metro Museum: Commemorative Ticket)

🌀 30,0 mm 🌀 2,2 mm 🧑 1,7 g 🧑 plastic (orange)

Macau



2019

🌀 30,0 mm 🌀 3,0 mm 🧑 2,4 g 🧑 plastic (blue)

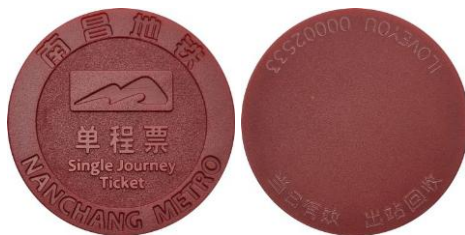


2019 (concessionary ticket)

🌀 30,0 mm 🌀 3,0 mm 🧑 2,7 g 🧑 plastic (green)

Nanchang

Commemorative issue for the opening of the Nanchang Metro 2015



2015 (Commemorative issue for the opening of the Nanchang Metro)

🌀 30,0 mm 🌀 2,1 mm 🌀 1,9 g 🌀 plastic (dark red)



2015 (Commemorative issue for the opening of the Nanchang Metro)

🌀 30,0 mm 🌀 2,4 mm 🌀 15,1 g 🌀 silver



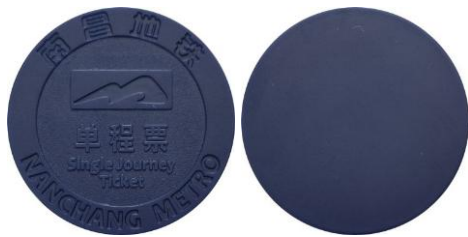
2015

🌀 30,0 mm 🌀 2,1 mm 🌀 1,9 g 🌀 plastic (dark red)



2015 (two numbers)

🌀 30,0 mm 🌀 2,1 mm 🌀 1,9 g 🌀 plastic (dark red)



2015 (test token)

🌀 30,0 mm 🌀 2,1 mm 🏊 1,9 g 🌀 plastic (blue)



2017 (test token, JINSHENG, same height)

🌀 30,0 mm 🌀 2,1 mm 🏊 1,9 g 🌀 plastic (dark red)



2017 (test token, JINSHENG)

🌀 30,0 mm 🌀 2,2 mm 🏊 2,0 g 🌀 plastic (dark red)



2017 (test token, JS, bold font)

🌀 30,0 mm 🌀 2,2 mm 🏊 2,0 g 🌀 plastic (dark red)



2017 (test token, JS)

🌀 30,0 mm 🌀 2,1 mm 🏊 1,9 g 🌀 plastic (dark red)



2020 (blank reverse)

🌀 30,0 mm 🌀 1,9 mm 🏊 1,7 g 🌀 plastic (dark red)



2021

🌀 30,0 mm 🌀 2,0 mm 🏊 1,7 g 🌀 plastic (dark red)

Nanjing



2005 (opening Nanjing Metro: no. 1)

🌀 30,0 mm 🌀 3,0 mm 🌀 2,3 g 🌀 plastic (brown-beige)



2005 (opening Nanjing Metro: no. 2)

🌀 30,0 mm 🌀 3,0 mm 🌀 2,3 g 🌀 plastic (brown-beige)



2005 (opening Nanjing Metro: no. 3)

🌀 30,0 mm 🌀 3,0 mm 🌀 2,3 g 🌀 plastic (brown-beige)



2005 (opening Nanjing Metro: no. 4)

🌀 30,0 mm 🌀 3,0 mm 🌀 2,3 g 🌀 plastic (brown-beige)



2005 (opening Nanjing Metro: no. 5)

🌀 30,0 mm 🌀 3,0 mm 🌀 2,3 g 🌀 plastic (brown-beige)



2005 (opening Nanjing Metro: no. 6)

🌀 30,0 mm 🌀 3,0 mm 🌀 2,3 g 🌀 plastic (brown-beige)



2005 (opening Nanjing Metro: no. 7)

🌀 30,0 mm 🌀 3,0 mm 🌀 2,3 g 🌀 plastic (brown-beige)



2005 (opening Nanjing Metro: no. 8)
30,0 mm 3,0 mm 2,3 g plastic (brown-beige)



2005 (opening Nanjing Metro: no. 9)
30,0 mm 3,0 mm 2,3 g plastic (brown-beige)



2005 (opening Nanjing Metro: no. 10)
30,0 mm 3,0 mm 2,3 g plastic (brown-beige)



2005 (opening Nanjing Metro: no. 11)
30,0 mm 3,0 mm 2,3 g plastic (brown-beige)



2005 (opening Nanjing Metro: no. 12)
30,0 mm 3,0 mm 2,3 g plastic (brown-beige)



2005 (opening Nanjing Metro: no. 13)
30,0 mm 3,0 mm 2,3 g plastic (brown-beige)



2005 (opening Nanjing Metro: no. 14)
30,0 mm 3,0 mm 2,3 g plastic (brown-beige)



2005 (opening Nanjing Metro: no. 15)

🌀 30,0 mm 🌀 3,0 mm 🍷 2,3 g 🍷 plastic (brown-beige)



2005 (opening Nanjing Metro: no. 16)

🌀 30,0 mm 🌀 3,0 mm 🍷 2,3 g 🍷 plastic (brown-beige)



2005 (50000001FS)

🌀 30,0 mm 🌀 3,0 mm 🍷 2,5 g 🍷 plastic (dark grey blue)



2005 (50000001FS)

🌀 30,0 mm 🌀 3,0 mm 🍷 2,4 g 🍷 plastic (dark blue)



2005 (54000001FS)

🌀 30,0 mm 🌀 3,0 mm 🍷 2,6 g 🍷 plastic (dark blue)



2005 (55000001FS)

🌀 30,0 mm 🌀 3,0 mm 🍷 2,5 g 🍷 plastic (dark blue)



2005 (5A000001FS, reverse narrow font)

🌀 30,0 mm 🌀 3,0 mm 🍷 2,6 g 🍷 plastic (dark blue)



2005 (5A000001FS, reverse wide font)

🌀 30,0 mm 🌀 3,0 mm 🧑 2,6 g 🗑️ plastic (dark blue)



2005 (50000001FS, reverse with three lines)

🌀 30,0 mm 🌀 3,0 mm 🧑 2,6 g 🗑️ plastic (dark blue)



2005 (5E1F8401FS, reverse with three lines)

🌀 30,0 mm 🌀 3,0 mm 🧑 2,4 g 🗑️ plastic (dark blue)



2005 (53000001FS, reverse with two lines)

🌀 30,0 mm 🌀 3,0 mm 🧑 2,5 g 🗑️ plastic (dark blue)



2005 (54000001FS, reverse with two lines)

🌀 30,0 mm 🌀 3,0 mm 🧑 2,5 g 🗑️ plastic (dark blue)



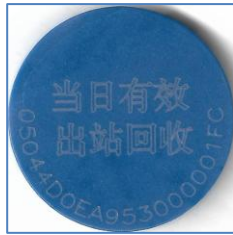
2005 (60000001FS, reverse with two lines)

🌀 30,0 mm 🌀 3,0 mm 🧑 2,5 g 🗑️ plastic (dark blue)



2014 (reverse with three lines)

🌀 30,0 mm 🌀 3,0 mm 🧑 2,5 g 🗑️ plastic (blue)



2014 (53000001FC, reverse with two lines)

🌀 30,0 mm 🌀 3,0 mm 🍷 2,5 g 🍷 plastic (blue)



2014 (54000001FC, reverse with two lines)

🌀 30,0 mm 🌀 3,0 mm 🍷 2,5 g 🍷 plastic (blue)



2014 (60000001FC, reverse with two lines)

🌀 30,0 mm 🌀 3,0 mm 🍷 2,5 g 🍷 plastic (blue)



2018 (blank reverse)

🌀 30,0 mm 🌀 3,0 mm 🍷 2,4 g 🍷 plastic (grey blue)



2018 (54000001FY)

🌀 30,0 mm 🌀 3,0 mm 🍷 2,4 g 🍷 plastic (grey blue)



2018 (55000001FY)

🌀 30,0 mm 🌀 3,0 mm 🍷 2,4 g 🍷 plastic (grey blue)



2018 (5E000001FY)

🌀 30,0 mm 🌀 3,0 mm 🍷 2,6 g 🍷 plastic (grey blue)



2023 (Chuzhou rail transit)

30,0 mm 3,0 mm 2,6 g plastic (orange)

Nanning



2016

30,0 mm 3,0 mm 2,6 g plastic (blue)

Shenzhen



2004

30,0 mm 3,0 mm 2,5 g plastic (green)

2004

30,0 mm 2,2 mm ? ,7 g plastic (yellow)



2005 (test token)

30,0 mm 3,0 mm 2,5 g plastic (green)



2011

30,0 mm 3,0 mm 2,5 g plastic (green)



2011 (reverse with large font)

30,0 mm 3,0 mm 2,4 g plastic (green)



2016

30,0 mm 3,0 mm 2,5 g plastic (yellow)

Tianjin



2006 (opening Tianjin Metro)

30,0 mm 3,0 mm 2,2 g plastic (grey)



2006? (emergency token)

30,0 mm 3,0 mm 2,5 g plastic (orange)



2006? (Agricultural Bank of China)

30,0 mm 3,0 mm 2,5 g plastic (green)



2015 (test token)

30,0 mm 3,0 mm 2,5 g plastic (green)



2015 (blank reverse)

30,0 mm 3,0 mm 2,5 g plastic (green)



2015 (reverse only with number, small font)

30,0 mm 3,0 mm 2,5 g plastic (green)



2015 (reverse only with number, medium font)
 ⓪ 30,0 mm Ⓜ 3,0 mm ⚖ 2,5 g 🗑 plastic (green)



2015 (reverse only with number, large font)
 ⓪ 30,0 mm Ⓜ 3,0 mm ⚖ 2,4 g 🗑 plastic (green)



2015 (reverse with one line, small font)
 ⓪ 30,0 mm Ⓜ 3,0 mm ⚖ 2,5 g 🗑 plastic (green)



2015 (reverse with one line, large font)
 ⓪ 30,0 mm Ⓜ 3,0 mm ⚖ 2,5 g 🗑 plastic (green)



2015 (reverse with two lines)
 ⓪ 30,0 mm Ⓜ 3,0 mm ⚖ 2,5 g 🗑 plastic (green)



2015 (emergency token)
 ⓪ 30,0 mm Ⓜ 3,0 mm ⚖ 2,5 g 🗑 plastic (orange)

Commemorative issue with 6 tokens in an album in the colours of the lines (2020)
 On reverse the Chinese Fu sign (luck) is designed by famous calligraphers.



2020 (Commemorative issue, Fu-sign/luck)

30,0 mm 3,0 mm 2,6 g plastic (red)



2020 (Commemorative issue Fu-sign/luck)

30,0 mm 3,0 mm 2,5 g plastic (yellow)



2020 (Commemorative issue, Fu-sign/luck)

30,0 mm 3,0 mm 2,6 g plastic (blue)



2020 (Commemorative issue, Fu-sign/luck)

30,0 mm 3,0 mm 2,6 g plastic (orange)



2020 (Commemorative issue, Fu-sign/luck)

30,0 mm 3,0 mm 2,6 g plastic (violet)



2020 (Commemorative issue, Fu-sign/luck)

30,0 mm 3,0 mm 2,6 g plastic (dark blue)

Wuhan



2004

30,0 mm 3,0 mm 2,3 g plastic (dark blue)



2006 to 2007 (test token)

30,0 mm 3,0 mm 2,5 g plastic (yellow)



2006 to 2007 (test token)

30,0 mm 3,0 mm 2,4 g plastic (light green)

2006 to 2007 (test token)

30,0 mm 3,0 mm 2,4 g plastic (dark green)



2010?

30,0 mm 3,0 mm 2,4 g plastic (blue)



2015 (2015 03 01)

30,0 mm 3,0 mm 2,6 g plastic (blue)

2015 (2015 06 01)

30,0 mm 3,0 mm 2,6 g plastic (blue)



2016 (2016 03 01)

30,0 mm 3,0 mm 2,6 g plastic (blue)



2016 (2016 05 01)

30,0 mm 3,0 mm 2,6 g plastic (blue)



2017 (2017 06 01)

30,0 mm 3,0 mm 2,5 g plastic (blue)



2017 (2017 06 02)

30,0 mm 3,0 mm 2,5 g plastic (blue)



2017 (2017 06 03)

30,0 mm 3,0 mm 2,5 g plastic (blue)



2017 (2017 06 04)

30,0 mm 3,0 mm 2,6 g plastic (blue)



2017 (2017 06 05)

30,0 mm 3,0 mm 2,6 g plastic (blue)



2018 (2018 06 01)

🌀 30,0 mm 🌀 3,0 mm 🧑 2,5 g 🧑 plastic (blue)



2018 (2018 06 02)

🌀 30,0 mm 🌀 3,0 mm 🧑 2,5 g 🧑 plastic (blue)



2019 (2019 06 01)

🌀 30,0 mm 🌀 3,0 mm 🧑 2,5 g 🧑 plastic (blue)



2019 (2019 06 02)

🌀 30,0 mm 🌀 3,0 mm 🧑 2,4 g 🧑 plastic (blue)



2020 (2020 06 01)

🌀 30,0 mm 🌀 3,0 mm 🧑 2,4 g 🧑 plastic (blue)



2020 (2020 06 02)

🌀 30,0 mm 🌀 3,0 mm 🧑 2,4 g 🧑 plastic (blue)

Xiamen



2017 (2017-09-20)

🌀 30,0 mm 🌀 3,0 mm 🧑 2,5 g 🧑 plastic (blue)



2017 (2017-10-16)

 30,0 mm  3,0 mm  2,4 g  plastic (blue)



2017 (2017-11-02)

 30,0 mm  3,0 mm  2,4 g  plastic (blue)



2017 (2017-11-08)

 30,0 mm  3,0 mm  2,5 g  plastic (blue)



2017 (2017-11-14)

 30,0 mm  3,0 mm  2,4 g  plastic (blue)

2017 (2017-11-20)

 30,0 mm  3,0 mm  2,4 g  plastic (blue)



2017 (2017-11-25)

 30,0 mm  3,0 mm  2,5 g  plastic (blue)



2017 (2017-12-01)

 30,0 mm  3,0 mm  2,4 g  plastic (blue)



2017 (2017-12-06)

🌀 30,0 mm 🌀 3,0 mm 🧑 2,4 g 🧑 plastic (blue)



2018 (2018-08-10)

🌀 30,0 mm 🌀 3,0 mm 🧑 2,5 g 🧑 plastic (blue)

Georgia

Tbilisi



1992 to 1994

🌀 22,0 mm 🌀 1,4 mm 🧑 3,8 g 🧑 brass



1994 to 1997 (medal alignment)

🌀 22,0 mm 🌀 1,6 mm 🧑 1,1 g 🧑 plastic (black)



1994 to 1997 (coin alignment)

🌀 22,0 mm 🌀 1,6 mm 🧑 1,1 g 🧑 plastic (black)



1997 to 2008

🌀 22,0 mm 🌀 2,0 mm 🧑 0,5 g 🧑 plastic (red)



2008

🌀 22,0 mm 🌀 2,0 mm 🧑 0,6 g 🧑 plastic (orange, transparent)



2008

🌀 22,0 mm 🌀 2,0 mm 🧑 0,6 g 🧑 plastic (light blue)

Germany

Berlin





1922 (2 Mark)

🌀 86,0 x 61,0 mm 🌀 0,0 mm 🍷 0,4 g 🗑️ paper

Hamburg



1920 to 1921

🌀 35,0 x 35,0 mm 🌀 0,4 mm 🍷 0,4 g
🗑️ cardboard (creme and brown, print grey)



1920 to 1921

🌀 32,8 x 32,8 mm 🌀 0,4 mm 🍷 0,4 g
🗑️ cardboard (creme and pink, print brown)



1920 to 1921

🌀 25,6 mm 🌀 3,7 mm 🍷 3,5 g
🗑️ Böttger Steinzeug (Porzellanmanufaktur Meißen)



1921 to 1922

🌀 22,4 x 22,4 mm 🌀 1,1 mm 🍷 4,0 g 🗑️ iron



1921 to 1922

🌀 25,8 mm 🌀 1,1 mm 🍷 3,8 g 🗑️ iron



1923

🌀 35,0 x 35,0 mm 🌀 0,4 mm 🍷 0,4 g
🗑️ cardboard (grey green, print black)



1959 to 1963

🌀 17,9 mm 🌀 1,6 mm 🍷 3,0 g 🍷 copper-nickel

19?? (Essenmarke A)

🌀 26,0 mm 🌀 1,9 mm 🍷 1,0 g 🍷 plastic (orange, black)



19?? (Kantinen Wertmarke B)

🌀 26,0 mm 🌀 1,9 mm 🍷 1,0 g 🍷 plastic (green, black)



19?? (Milchmarke)

🌀 26,4 mm 🌀 1,5 mm 🍷 6,5 g 🍷 brass

Great Britain

National Transport Token - Metrocar



1981

🌀 25,0 mm 🌀 1,4 mm 🍷 1,5 g 🍷 aluminium

India

Bengaluru



2011

🌀 30,0 mm 🌀 3,2 mm 🍷 2,7 g 🍷 plastic (black)



2017 (reverse: Vidhana Soudha)

🌀 30,0 mm 🌀 3,1 mm 🍷 2,5 g 🍷 plastic



2017 (reverse: Hampi)
 30,0 mm 3,3 mm 2,5 g plastic

Delhi



2016 (large font)
 30,0 mm 3,0 mm 2,7 g plastic



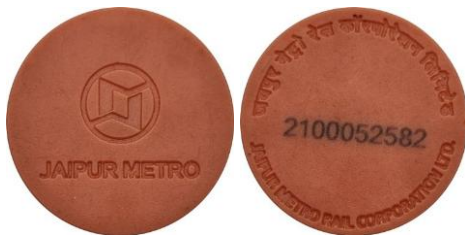
2016 (small font)
 30,0 mm 3,0 mm 2,7 g plastic

2017 (Airport Line)
 30,0 mm ? mm 2,7 g plastic



2017 (LIC insurance)
 30,0 mm 3,0 mm 2,6 g plastic

Jaipur



2015
 30,0 mm 3,0 mm 2,5 g plastic (orange)

Kolkata



1997
 30,0 mm 3,0 mm 2,6 g plastic (black)



1997

○ 30,0 mm ⬭ 3,0 mm ⚖️ 2,6 g 🗑️ plastic (yellow)



2020?

○ 30,0 mm ⬭ 3,0 mm ⚖️ 2,6 g 🗑️ plastic

Mumbai



2014

○ 30,0 mm ⬭ 3,0 mm ⚖️ 2,4 g 🗑️ plastic (grey)

Israel

Haifa



1959 (Carmelit)

○ 15,0 mm ⬭ 1,8 mm ⚖️ 2,1 g 🗑️ brass



1959 (Carmelit)

○ 17,0 mm ⬭ 1,8 mm ⚖️ 2,8 g 🗑️ copper-nickel



1986 (Carmelit)

○ 17,0 mm ⬭ 1,6 mm ⚖️ 2,8 g 🗑️ copper-nickel

Italy

Rome



1955

○ 25,0 mm ⬭ 1,6 mm ⚖️ 6,6 g 🗑️ copper-nickel

Kazakhstan

Almaty



2011
🌀 29,9 mm 🌀 3,0 mm 🍷 2,2 g 🍷 plastic (yellow)



2013
🌀 30,0 mm 🌀 3,0 mm 🍷 2,2 g 🍷 plastic (red coloured)



2015 (for children)
🌀 30,0 mm 🌀 3,0 mm 🍷 1,8 g 🍷 plastic (red)



2024
🌀 30,0 mm 🌀 3,0 mm 🍷 2,3 g 🍷 plastic (dark green coloured)



2024
🌀 30,0 mm 🌀 3,0 mm 🍷 2,3 g 🍷 plastic (light grey coloured)

Malaysia

Kuala Lumpur



2011 to 2017
🌀 30,0 mm 🌀 3,0 mm 🍷 2,4 g 🍷 plastic (blue)



2011 to 2017

30,0 mm 3,0 mm 2,4 g plastic (red)



2015 (1504)

30,0 mm 3,0 mm 2,4 g plastic (blue)



2015 (1504)

30,0 mm 3,0 mm 2,4 g plastic (red)



2015 (1506)

30,0 mm 3,0 mm 2,4 g plastic (blue)



2015 (1506)

30,0 mm 3,0 mm 2,4 g plastic (red)



2016

30,0 mm 3,0 mm 2,4 g plastic (blue)



2017

30,0 mm 3,0 mm 2,4 g plastic (blue)



2021 (03)

🌀 30,0 mm 🌀 3,0 mm 🧊 2,3 g 🗑️ plastic (blue)



2021 (08)

🌀 30,0 mm 🌀 3,0 mm 🧊 2,3 g 🗑️ plastic (blue)

Mexico

Guadalajara



1989?

🌀 21,8 mm 🌀 1,8 mm 🧊 4,6 g 🗑️ brass



1989?

🌀 22,0 mm 🌀 2,0 mm 🧊 3,6 g 🗑️ steel



1989?

🌀 24,4 mm 🌀 2,0 mm 🧊 4,3 g 🗑️ steel

Monterrey



1999

🌀 25,0 mm 🌀 1,5 mm 🧊 5,3 g 🗑️ brass



2001

🌀 25,0 mm 🌀 1,5 mm 🧊 5,3 g 🗑️ brass

Philippines

Manila



1984 to 1998

🌀 26,6 mm 🌀 2,1 mm 🍷 9,2 g 🍷 brass

Russia

Yekaterinburg



1992

🌀 25,0 mm 🌀 1,6 mm 🍷 0,9 g 🍷 plastic (blue)



1992

🌀 25,0 mm 🌀 1,6 mm 🍷 0,9 g 🍷 plastic (light grey)



1992

🌀 25,0 mm 🌀 1,6 mm 🍷 0,9 g 🍷 plastic (grey)



1992 (inlay with whole)

🌀 25,0 mm 🌀 1,6 mm 🍷 0,9 g 🍷 plastic (grey)



1992

🌀 25,0 mm 🌀 1,6 mm 🍷 0,9 g 🍷 plastic (black)



1992 (large distance between „E“ and „K“)

🌀 25,0 mm 🌀 1,5 mm 🍷 0,9 g 🍷 plastic (light grey)



1994

🌀 25,0 mm 🌀 1,6 mm 🍷 5,3 g 🍷 copper-plated steel



1995

🌀 25,0 mm 🌀 1,6 mm 🍷 5,4 g 🍷 steel

Kazan



2005 (1000 Years Kazan)

🌀 30,0 mm 🌀 3,0 mm 🍷 1,8 g 🍷 plastic (yellow)



2005 (1000 Years Kazan)

🌀 30,0 mm 🌀 3,0 mm 🍷 1,8 g 🍷 plastic (pink)



2005 (1000 Years Kazan)

🌀 30,0 mm 🌀 3,0 mm 🍷 1,8 g 🍷 plastic (violet)



2005 (1000 Years Kazan)

🌀 30,0 mm 🌀 3,0 mm 🍷 1,8 g 🍷 plastic (blue)



2005 (1000 Years Kazan)

🌀 30,0 mm 🌀 3,0 mm 🍷 2,6 g 🍷 plastic (green)



2005 (1000 Years Kazan)

🌀 30,0 mm 🌀 3,0 mm 🧑 1,8 g 🗑️ plastic (dark green)



2005 (1000 Years Kazan, small font)

🌀 30,0 mm 🌀 3,0 mm 🧑 2,1 g 🗑️ plastic (dark green)

2023

🌀 30,0 mm 🌀 2,6 mm 🧑 2,0 g 🗑️ plastic (dark green)

Moscow



1935

🌀 19,0 mm 🌀 1,6 mm 🧑 2,8 g 🗑️ bronze



1955 to 1960

🌀 18,5 mm 🌀 1,4 mm 🧑 2,8 g 🗑️ copper-nickel



1992

🌀 25,0 mm 🌀 1,6 mm 🧑 5,3 g 🗑️ copper-plated steel



1992 to 1999

🌀 24,8 mm 🌀 2,1 mm 🧑 0,9 g 🗑️ plastic (yellow-green, transparent)



1992 to 1999 (large circles above and below „M“)

🌀 24,8 mm 🌀 2,1 mm 🧑 0,9 g 🗑️ plastic (yellow-green, transparent)



1992 to 1999 (small circles above and below „M“)

🌀 24,8 mm 🌀 2,0 mm 🧑 0,9 g 🗑️ plastic (yellow-green, transparent)



1992 to 1999 (on reverse letters much thinner)

🌀 24,8 mm 🌀 2,1 mm 🌀 0,9 g 🌀 plastic (yellow-green, transparent)



1992 to 1999 (obverse and reverse misaligned)

🌀 25,0 mm 🌀 2,1 mm 🌀 0,8 g 🌀 plastic (yellow-green, transparent)



1992 to 1999 (bold „M“)

🌀 25,0 mm 🌀 2,0 mm 🌀 0,9 g 🌀 plastic (yellow-green, transparent)



1995 (60 Years Moscow Metro)

🌀 24,8 mm 🌀 2,2 mm 🌀 0,9 g 🌀 plastic (green, transparent)



2015 (copy of 1935er token – 80 Years Moscow Metro)

🌀 19,0 mm 🌀 1,6 mm 🌀 2,5 g 🌀 bronze



2015 (copy of 1935er token – 80 Years Moscow Metro)

🌀 19,0 mm 🌀 1,6 mm 🌀 2,1 g 🌀 bronze

Souvenir token: Bolshoi Theatre (2017)



Жетон сувенирный
 Материал: латунь.
 Страна изготовления: Россия.
 Срок годности не ограничен.
 Не подлежит обязательной сертификации.
 Не требует специальных условий хранения.
 Изготовлено по лицензии
 ГУП «Московский метрополитен».
 Лицензиат: ООО «Дизайн-Бюро «Столица».
 105066, г. Москва, ул. Спартаковская,
 д. 19, стр. 3А.
 Телефон: +7 (499) 394-49-27
 info@destol.ru

EAC



Московский
Транспорт



Московский
Метрополитен



2017 (souvenir token)

🌀 32,8 mm 🌀 2,0 mm 🍷 13,3 g 🍷 brass



2018 (Troika)

🌀 30,0 mm 🌀 3,0 mm 🍷 2,3 g 🍷 plastic (yellow)



2018 (Troika)

🌀 30,0 mm 🌀 3,0 mm 🍷 2,3 g 🍷 plastic (red)



2018 (Troika)

🌀 30,0 mm 🌀 3,0 mm 🍷 2,3 g 🍷 plastic (blue)



2018 (Troika)

🌀 30,0 mm 🌀 3,0 mm 🏊 2,3 g 🏊 plastic (green)



2018 (Troika)

🌀 30,0 mm 🌀 3,0 mm 🏊 2,3 g 🏊 plastic (grey)

Nizhny Novgorod



1992 to 2010

🌀 23,3 mm 🌀 1,6 mm 🏊 4,4 g 🏊 brass



2010

🌀 23,3 mm 🌀 1,6 mm 🏊 4,1 g 🏊 brass

Novosibirsk



1992 to 1995

🌀 24,0 mm 🌀 1,5 mm 🏊 4,5 g 🏊 copper-nickel



1993

🌀 24,0 mm 🌀 1,4 mm 🏊 4,8 g 🏊 copper-plated steel



1993

🌀 24,0 mm 🌀 1,4 mm 🏊 4,7 g 🏊 brass-coated steel

Samara



1992

23,3 mm 1,6 mm 4,4 g brass



1992

23,3 mm 2,2 mm 1,8 g plastic (black)



1995 (with dot, one wave)

23,3 mm 2,2 mm 1,8 g plastic (black)



1995 (with dot, two waves)

23,3 mm 2,2 mm 2,1 g plastic (black)



1995 (without dot, one wave)

23,3 mm 2,2 mm 2,0 g plastic (black)

Saint Petersburg



1958 to 1961

21,0 mm 1,4 mm 3,7 g copper-nickel



1992 (small separator)

23,3 mm 1,5 mm 4,3 g brass



1992 (large separator)

23,3 mm 1,5 mm 4,3 g brass



1992 (thin font)

🌀 23,3 mm 🌀 1,5 mm 🌀 4,4 g 🌀 brass



2006 to 2009 (luggage token)

🌀 23,2 mm 🌀 1,6 mm 🌀 0,9 g 🌀 plastic (white)



2014 (60 Years Saint Petersburg Metro)

🌀 23,2 mm 🌀 1,6 mm 🌀 4,4 g 🌀 brass

South Korea

Busan



2011 (single ticket, blue border)

🌀 35,0 mm 🌀 2,1 mm 🌀 2,8 g 🌀 plastic (blue)



2011 (reduced ticket, blue border)

🌀 35,0 mm 🌀 2,1 mm 🌀 2,8 g 🌀 plastic (green)



2011 (reduced ticket, blue border, reverse without green ring)

🌀 35,0 mm 🌀 2,1 mm 🌀 2,9 g 🌀 plastic (green)



2011 (free pass, blue border)

35,0 mm 2,1 mm 2,8 g plastic (red)



2011 (exit ticket, blue border)

35,0 mm 2,1 mm 2,8 g plastic (yellow)



2011 (exit ticket, blue border, reverse without yellow ring)

35,0 mm 2,1 mm 2,8 g plastic (yellow)



2011 (reduced ticket)

35,0 mm 2,1 mm 3,0 g plastic (green)



2016 (Donghae line)

35,0 mm 2,1 mm 3,0 g plastic (light blue, white)

Daegu



1997? (reduced ticket)

35,0 mm 1,6 mm 2,3 g plastic (yellow, white, black)



1997? (free pass: TIT – Tongmyung University Busan)

35,0 mm 1,6 mm 2,3 g plastic (blue, white, black)



1997? (free pass: „Let’s be the Titian“ – Tongmyung University Busan)

35,0 mm 1,6 mm 2,1 g plastic (blue, white, black)



1997? (free pass: „Let’s be the Titian“ – Tongmyung University Busan)

35,0 mm 1,6 mm 2,1 g plastic (blue, white, black)



1997? (single ticket: TIT – Tongmyung University Busan)

35,0 mm 1,6 mm 2,1 g plastic (green, white, black)



1997? (single ticket: „Let’s be the Titian“ – Tongmyung University Busan)

35,0 mm 1,6 mm 2,3 g plastic (green, white, black)



2014 (free pass)

35,0 mm 1,6 mm 2,2 g plastic (yellow, blue)



2014 (reduced ticket)

○ 35,0 mm ○ 1,8 mm ○ 2,3 g 🍷 plastic (green, blue)



2014 (reduced ticket, "power of optimism")

○ 35,0 mm ○ 1,8 mm ○ 2,3 g 🍷 plastic (green, blue)



April 2014 (free pass, 14-04)

○ 35,0 mm ○ 1,6 mm ○ 2,1 g 🍷 plastic (yellow, blue)



April 2014 (reduced ticket, 14-04)

○ 35,0 mm ○ 1,6 mm ○ 2,0 g 🍷 plastic (green, blue)



April 2014 (single ticket, 14-04)

○ 35,0 mm ○ 1,6 mm ○ 2,1 g 🍷 plastic (light blue, blue)



April 2014 (exit ticket, 14-04)

○ 35,0 mm ○ 1,6 mm ○ 2,1 g 🍷 plastic (light violet, blue)



May 2014 (free pass, 14-05)

35,0 mm 1,6 mm 2,2 g plastic (yellow, blue)



May 2014 (reduced ticket, 14-05)

35,0 mm 1,6 mm 2,1 g plastic (green, blue)



May 2015 (free pass, 15-05)

35,0 mm 1,6 mm 2,1 g plastic (yellow, blue)



May 2015 (single ticket, 15-05)

35,0 mm 1,6 mm 2,2 g plastic (light blue, blue)



2015 (Sky Rail)

35,0 mm 1,6 mm 2,2 g plastic (red, yellow)



May 2016 (free pass, 16-05)

35,0 mm 1,5 mm 2,1 g plastic (yellow, blue)



March 2017 (free pass, 17-03)

35,0 mm 1,5 mm 2,2 g plastic (yellow, blue)



March 2018 (free pass, 18-03)

35,0 mm 1,5 mm 2,2 g plastic (yellow, blue)



March 2018 (reduced ticket, 18-03)

35,0 mm 1,6 mm 2,2 g plastic (green, blue)

March 2019 (reduced ticket, 19-03)

35,0 mm 1,8 mm 2,3 g plastic (green, blue)



February 2021 (free pass, 21-02)

35,0 mm 1,7 mm 2,4 g plastic (yellow, blue)

Daejeon



2006? (single ticket)

35,0 mm 2,0 mm 2,5 g plastic (blue)



2006? (single ticket: Pai Chai University)

35,0 mm 2,0 mm 2,5 g plastic (blue)



2006? (reduced ticket)

35,0 mm 2,0 mm 2,5 g plastic (green)

Gwangju



2004? (single ticket)

35,0 mm 1,6 mm 2,2 g plastic (yellow, grey, black)



2004? (single ticket)

35,0 mm 1,8 mm 2,7 g plastic (orange, grey, blue)



2004? (single ticket: Samsung anycar)

35,0 mm 1,5 mm 2,1 g plastic (orange, grey, blue)



2004? (reduced ticket: Samsung anycar)

35,0 mm 1,5 mm 2,1 g plastic (orange, green, blue)

2004? (free pass)

35,0 mm 1,5 mm 2,1 g plastic (orange, grey)

2004? (reduced ticket)

35,0 mm 1,5 mm 2,1 g plastic (turkis, grey, blue)

2004? (Chungjang Festival)

35,0 mm 1,5 mm 2,1 g plastic (orange, grey)

Uijeongbu



2012 (VAL)

35,0 mm 2,1 mm 1,7 g plastic (blue, yellow, white)

Yongin



2013

35,0 mm 2,1 mm 1,7 g plastic (light green, white)

Taiwan

Kaohsiung



2008 (small font on reverse)

30,0 mm 3,0 mm 2,7 g plastic (blue)



2008 (large font on reverse)

30,0 mm 3,0 mm 2,7 g plastic (blue)

Taichung



2021

30,0 mm 3,0 mm 1,7 g plastic (green)

Commemorative issue for reaching 10 million passengers in Metro Taichung (17th September 2022)



2022 (10 million passengers)

30,0 mm 3,0 mm 1,8 g plastic (black)

Commemorative issue for reaching 20 million passengers in Metro Taichung (19th – 21st August 2023)



2023 (20 million passengers)

30,0 mm 3,0 mm 2,2 g plastic (white)

Chinese Valentine's Day 2024 (10th August 2024)



2024 (Chinese Valentine's Day)

30,0 mm 3,0 mm 1,8 g plastic (pink)

Taipei



2006 (test token)

30,0 mm 3,0 mm 2,3 g plastic (blue)

Labour Day (Commemorative Tokens, 1st May 2007)





五一勞動節紀念章

<p>【銀章規格】 材質：含銀千分之九九九 重量：1/2英兩 直徑：33公釐 等級：精鑄</p>	<p>【銅章規格】 材質：銅合金(含銅70%) 重量：15公克 直徑：32公釐 等級：平鑄</p>
---	--

【委鑄單位】台北大眾捷運股份有限公司職工福利委員會
 【鑄造單位】中央造幣廠
 【委鑄日期】民國96年5月1日

0079

親愛的會員您好：

本款五一紀念IC單程票 (TOKEN)
 僅供搭乘一週 (期限為96.05.01~96.10.28)
 僅適用於捷運新式閘門
 直接感應，不回收

台北捷運公司職工福利委員會



1st May 2007 (Labour Day)
 33,0 mm 1,7 mm 15,6 g 999er silver



1st May 2007 (Labour Day)
 32,0 mm 1,6 mm 15,0 g bronze-copper



1st May 2007 (Labour Day)

30,0 mm 3,0 mm 2,2 g plastic (blue)



2007

30,0 mm 3,0 mm 2,3 g plastic (blue grey)



2007 (reverse with number „071“)

30,0 mm 3,0 mm 2,5 g plastic (dark blue)



2007 (reverse with number „072“)

30,0 mm 3,0 mm 2,5 g plastic (dark blue)



2009 (reverse with number „091“)

30,0 mm 3,0 mm 2,2 g plastic (dark blue)



2009 (reverse with number „092“)

30,0 mm 3,0 mm 2,3 g plastic (dark blue)



2010 (reverse with number „100“)

30,0 mm 3,0 mm 2,3 g plastic (blue grey)



2010 (reverse with number „101“)
 ⓪ 30,0 mm Ⓜ 3,0 mm ⚖ 2,3 g 🗑 plastic (blue grey)



2010 (reverse with number „102“)
 ⓪ 30,0 mm Ⓜ 3,0 mm ⚖ 2,1 g 🗑 plastic (blue grey)



2010 (reverse with number „102“)
 ⓪ 30,0 mm Ⓜ 3,0 mm ⚖ 2,1 g 🗑 plastic (blue)



2012 (reverse with number „121“)
 ⓪ 30,0 mm Ⓜ 3,0 mm ⚖ 2,2 g 🗑 plastic (dark blue)



2012 (reverse with number „122“)
 ⓪ 30,0 mm Ⓜ 3,0 mm ⚖ 2,1 g 🗑 plastic (dark blue)



2016 (20 Years Metro Taipei)
 ⓪ 30,0 mm Ⓜ 3,0 mm ⚖ 2,0 g 🗑 plastic (light brown)



2016 (20 Years Metro Taipei)
 ⓪ 30,0 mm Ⓜ 3,0 mm ⚖ 2,1 g 🗑 plastic (red)



2016 (20 Years Metro Taipei)

🌀 30,0 mm 🌀 3,0 mm 🧑 2,1 g 🌀 plastic (green)



2016 (20 Years Metro Taipei)

🌀 30,0 mm 🌀 3,0 mm 🧑 2,0 g 🌀 plastic (yellow)



2016 (20 Years Metro Taipei)

🌀 30,0 mm 🌀 3,0 mm 🧑 2,0 g 🌀 plastic (blue)

Commemorative issue Taipei Sommer Universiade 2017 (5 tokens)



2017 (Summer Universiade, baseball)

🌀 30,0 mm 🌀 3,0 mm 🧑 2,3 g 🌀 plastic (white, black)



2017 (Summer Universiade, weightlifting)

🌀 30,0 mm 🌀 3,0 mm 🧑 2,3 g 🌀 plastic (white, black)



2017 (Summer Universiade, golf)
30,0 mm 3,0 mm 2,3 g plastic (white, black)



2017 (Summer Universiade, torch relay)
30,0 mm 3,0 mm 2,3 g plastic (white, black)



2017 (Summer Universiade, badminton)
30,0 mm 3,0 mm 2,3 g plastic (white, black)



2018 (reverse with number „181“)
30,0 mm 3,0 mm 2,3 g plastic (dark blue)



2018 (reverse with number „182“)
30,0 mm 3,0 mm 2,3 g plastic (dark blue)



2019 (reverse with number „191“)
30,0 mm 3,0 mm 2,1 g plastic (blue)



2019 (reverse with number „192“)
30,0 mm 3,0 mm 2,2 g plastic (dark blue)



2019 (Longshan Temple Lucky Trip)

30,0 mm 3,0 mm 2,1 g plastic (pink)



2019 (Xia-Hai City God Temple)

30,0 mm 3,0 mm 2,0 g plastic (light red)



2020 (reverse with number „201“)

30,0 mm 3,0 mm 2,0 g plastic (blue)

2020 (reverse with number „202“)

30,0 mm 3,0 mm 2,1 g plastic (dark blue)



2020 (Year of Rat, Guandu Temple)

30,0 mm 3,0 mm 2,2 g plastic (red)



2020 (Year of Rat, Guandu Temple)

30,0 mm 3,0 mm 2,2 g plastic (orange)



2020 (Year of Rat, Guandu Temple)

30,0 mm 3,0 mm 2,2 g plastic (yellow)



2020 (travel pass)

30,0 mm 3,0 mm 2,0 g plastic (red)

Taipei Anytime 2023 (one day travel pass)



2023 (travel pass)

🌀 30,0 mm 🌀 3,0 mm 🍷 2,3 g 🍷 plastic (red)



27th January 2024 (Commemorative token: Year of the dragon)

🌀 40,0 mm 🌀 3,0 mm 🍷 28,4 g 🍷 brass

Celebrating the 140th Anniversary of Taipei





27th January 2024 (Commemorative token: Year of the dragon)

🌀 39,8 mm 🌀 3,2 mm 🍊 29,1 g 🍷 brass

Taoyuan



June 2015 (10406)

🌀 30,0 mm 🌀 3,0 mm 🍊 2,3 g 🍷 plastic (violet)



August 2017 (10608)

🌀 30,0 mm 🌀 3,0 mm 🍊 2,1 g 🍷 plastic (violet)

September 2018 (10709)

🌀 30,0 mm 🌀 3,0 mm 🍊 2,1 g 🍷 plastic (violet)

June 2019 (10806)

🌀 30,0 mm 🌀 3,0 mm 🍊 2,3 g 🍷 plastic (violet)



October 2019 (10810)

🌀 30,0 mm 🌀 3,0 mm 🍊 2,2 g 🍷 plastic (violet)



August 2021 (11008)

🌀 30,0 mm 🌀 3,0 mm 🍊 2,2 g 🍷 plastic (violet)

Thailand

Bangkok



2005 (BMCL)

30,0 mm 3,0 mm 2,6 g plastic (black)



2010 (Airport Rail Link)

30,0 mm 3,0 mm 2,7 g plastic (black)



2010 (Airport Rail Link)

30,0 mm 3,0 mm 2,3 g plastic (red)



2010 (Airport Rail Link, bold font)

30,0 mm 3,0 mm 2,4 g plastic (red)



2010 (Airport Rail Link)

30,0 mm 3,0 mm 2,5 g plastic (yellow)



2010 (Airport Rail Link, bold font)

30,0 mm 3,0 mm 2,5 g plastic (yellow)



January 2011 (BMCL)

30,0 mm 3,0 mm 2,7 g plastic (black)



January 2013 (BMCL)

🌀 30,0 mm 🌀 2,8 mm 🧑 2,5 g 🌀 plastic (black)



January 2015 (BMCL)

🌀 30,0 mm 🌀 3,0 mm 🧑 2,5 g 🌀 plastic (black)



June 2016 (MRTA, #1)

🌀 30,0 mm 🌀 3,1 mm 🧑 2,7 g 🌀 plastic (black)



August 2016 (BEM)

🌀 30,0 mm 🌀 3,1 mm 🧑 2,7 g 🌀 plastic (black)



October 2016 (MRTA, #2)

🌀 30,0 mm 🌀 3,1 mm 🧑 2,6 g 🌀 plastic (black)



June 2019 (BEM)

🌀 30,0 mm 🌀 3,1 mm 🧑 2,7 g 🌀 plastic (black)

Turkey

Istanbul



1971 (I.E.T.T. Tünel)

🌀 19,0 mm 🌀 1,6 mm 🧑 3,8 g 🌀 brass



1980er (I.E.T.T. Tünel)
Ø 19,0 mm 2,2 mm 3,8 g nickel

1980er (I.E.T.T. Tünel)
Ø 17,? mm 2,2 mm 3,8? g brass



1989 (I.E.T.T. Tünel)
Ø 15,0 mm 1,8 mm 2,6 g brass



1990
Ø 20,0 mm 2,0 mm 5,1 g copper-nickel



1990
Ø 22,4 mm 1,6 mm 5,1 g copper-nickel



2009
Ø 30,0 mm 3,0 mm 2,5 g plastic (blue)



2009
Ø 26,0 mm 3,0 mm 1,9 g plastic (red)



2010
Ø 30,0 mm 3,0 mm 2,3 g plastic (yellow)



2010
Ø 30,0 mm 2,6 mm 2,0 g plastic (yellow)



2012

26,0 mm 3,0 mm 1,9 g plastic (red)

Izmir



2000

22,4 mm 1,5 mm 4,6 g brass

Ukraine

Kharkiv



01.06.1992 (coat of arms of Ukraine)

25,0 mm 2,2 mm 0,9 g plastic (orange, transparent)



01.06.1992 (Salamander insurance)

25,0 mm 2,2 mm 0,9 g plastic (orange, transparent)



01.06.1992 (Salamander insurance, reverse rotated by 90°)

25,0 mm 2,2 mm 0,9 g plastic (orange, transparent)



August 1992 (coat of arms of Ukraine, wide font)

25,0 mm 2,2 mm 0,9 g plastic (orange, transparent)



August 1992 (Salamander insurance, wide font)

25,0 mm 2,2 mm 0,9 g plastic (orange, transparent)



August 1992 (Stank)

🌀 25,0 mm 🌀 2,2 mm 🍷 0,9 g 🍷 plastic (orange, transparent)



26.12.1992 (coat of arms of Ukraine)

🌀 25,0 mm 🌀 2,2 mm 🍷 0,9 g 🍷 plastic (orange)



26.12.1992 (Salamander insurance)

🌀 25,0 mm 🌀 2,2 mm 🍷 0,9 g 🍷 plastic (orange)



26.12.1992 (coat of arms of Ukraine, wide font)

🌀 25,0 mm 🌀 2,0 mm 🍷 0,8 g 🍷 plastic (orange)



26.12.1992 (Stank)

🌀 25,0 mm 🌀 2,1 mm 🍷 0,8 g 🍷 plastic (orange)



Mai 1993 (Stank)

🌀 25,0 mm 🌀 2,3 mm 🍷 0,9 g 🍷 plastic (orange)



Mai 1993 (Stank, coin alignment)

🌀 25,0 mm 🌀 2,2 mm 🍷 0,8 g 🍷 plastic (orange)



1993 (coat of arms of Ukraine)

🌀 25,0 mm 🌀 2,2 mm 🍷 0,8 g 🍷 plastic (orange)



1993 (coat of arms of Ukraine, writing and reverse rotated)

🌀 25,0 mm 🌀 2,2 mm 🍷 0,8 g 🍷 plastic (orange)



1993 (coat of arms of Kharkiv 1654)

🌀 25,0 mm 🌀 2,2 mm 🍷 0,8 g 🍷 plastic (orange)



1993 (coat of arms of Kharkiv 1781)

🌀 25,0 mm 🌀 2,2 mm 🍷 0,8 g 🍷 plastic (orange)



1993 (coat of arms of Kharkiv 1878)

🌀 25,0 mm 🌀 2,0 mm 🍷 0,7 g 🍷 plastic (orange)



1993 (coat of arms of Kharkiv 1968)

🌀 25,0 mm 🌀 2,2 mm 🍷 0,8 g 🍷 plastic (orange)



1993 (logo of Kharkiv Metro)

🌀 25,0 mm 🌀 2,2 mm 🍷 0,8 g 🍷 plastic (orange)



1993 (stylized letter „M“)

🌀 25,0 mm 🌀 2,2 mm 🍷 0,8 g 🍷 plastic (orange)



Oktober 1994 (Stank, bold „M“)

🌀 25,0 mm 🌀 2,2 mm 🍷 0,8 g 🍷 plastic (orange)



29.01.1996 (Stank)

🌀 25,0 mm 🌀 2,2 mm 🍷 0,8 g 🗑️ plastic (light green)



April 1996 (coat of arms of Kharkiv 1781)

🌀 25,0 mm 🌀 2,2 mm 🍷 0,8 g 🗑️ plastic (light green)



April 1996 (coat of arms of Kharkiv 1781, „M“ rotated)

🌀 25,0 mm 🌀 2,2 mm 🍷 0,8 g 🗑️ plastic (light green)



April 1996 (coat of arms of Kharkiv 1781, wide font)

🌀 25,4 mm 🌀 2,2 mm 🍷 0,8 g 🗑️ plastic (light green)



2000 (logo of Kharkiv Metro)

🌀 25,0 mm 🌀 2,2 mm 🍷 0,9 g 🗑️ plastic (green, transparent)



2003 (logo of Kharkiv Metro with letter „П“)

🌀 25,0 mm 🌀 2,2 mm 🍷 0,9 g 🗑️ plastic (green, transparent)



2003 (logo of Kharkiv Metro with letter „П“, wide font)

🌀 25,0 mm 🌀 2,2 mm 🍷 0,8 g 🗑️ plastic (green, transparent)



2009 (logo of Kharkiv Metro with letter „П“)

🌀 25,0 mm 🌀 2,2 mm 🍷 0,9 g 🗑️ plastic (blue, transparent)



2009 (logo of Kharkiv Metro with letter „П“ lying)

🌀 25,0 mm 🌀 2,2 mm 🏺 0,9 g 🌀 plastic (blue, transparent)



2009 (logo of Kharkiv Metro with letter „П“, wide font)

🌀 25,0 mm 🌀 2,2 mm 🏺 0,9 g 🌀 plastic (blue, transparent)



2010 (logo of Kharkiv Metro with letter „П“)

🌀 25,0 mm 🌀 2,2 mm 🏺 0,9 g 🌀 plastic (blue green, transparent)



2010 (logo of Kharkiv Metro with letter „П“ lying)

🌀 25,0 mm 🌀 2,2 mm 🏺 0,9 g 🌀 plastic (blue green, transparent)



2010 (logo of Kharkiv Metro with letter „П“, dots as separator)

🌀 25,0 mm 🌀 2,2 mm 🏺 0,9 g 🌀 plastic (blue green, transparent)



2012 (coat of arms of Kharkiv 1781)

🌀 25,0 mm 🌀 2,2 mm 🏺 0,7 g 🌀 plastic (blue green, transparent)



2012 (Kharko monument)

🌀 25,0 mm 🌀 2,2 mm 🏺 0,8 g 🌀 plastic (blue green, transparent)



2012 (Taras Shevchenko monument)

🌀 25,0 mm 🌀 2,2 mm 🏺 0,8 g 🌀 plastic (blue green, transparent)



2012 (Mirror Stream fountain)

🌀 25,0 mm 🌀 2,2 mm 🍷 0,8 g 🍷 plastic (blue green, transparent)

Dnipro



1995

🌀 24,8 mm 🌀 2,2 mm 🍷 0,9 g 🍷 plastic (light green)

Kiev



1992 to 1994 (type 721.4)

🌀 21,3 mm 🌀 1,4 mm 🍷 2,8 g 🍷 brass



1992 to 1994 (bold font)

🌀 21,2 mm 🌀 1,4 mm 🍷 3,1 g 🍷 brass



1992 to 1994 (bold font, petal bottom right is bordered)

🌀 21,3 mm 🌀 1,4 mm 🍷 3,1 g 🍷 brass



1992 to 1994 (type 721.5: thin ring)

🌀 21,3 mm 🌀 1,4 mm 🍷 3,0 g 🍷 brass



1992 to 1994 (type 721: large font, triple ring)

🌀 21,3 mm 🌀 1,4 mm 🍷 3,3 g 🍷 brass



1992 to 1994 (type 721.2: large font, large distance of Ì dots)

🌀 21,2 mm 🌀 1,4 mm 🍷 3,1 g 🍷 brass



1992 to 1994 (type 721.2: large font, Ì dots misaligned)

🌀 21,3 mm 🌀 1,4 mm 🍷 3,2 g 🍷 brass



1992 to 1994 (type 721.3: large font, petal bottom left is bordered)
○ 21,1 mm ⬭ 1,4 mm ⚖ 2,7 g 🪙 brass



1992 to 1994 (type 721.1: chestnut leaf on both sides)
○ 21,2 mm ⬭ 1,4 mm ⚖ 3,0 g 🪙 brass



1993 to 1994 (type 723: Bank Aval)
○ 17,2 mm ⬭ 1,5 mm ⚖ 1,9 g 🪙 brass



1993 to 1994 (type 723.1: Bank Aval, not filled)
○ 17,2 mm ⬭ 1,5 mm ⚖ 1,9 g 🪙 brass



1993 to 1994 (type 723.2: Bank Aval, not filled, double border)
○ 17,2 mm ⬭ 1,5 mm ⚖ 2,0 g 🪙 brass



1993 to 1994 (type 722)
○ 17,2 mm ⬭ 1,5 mm ⚖ 2,0 g 🪙 brass



1994 (type 724: round „M“)
○ 25,0 mm ⬭ 2,2 mm ⚖ 0,9 g 🪙 plastic (light blue)



1994 (type 724.1: round „M“)
○ 25,0 mm ⬭ 2,2 mm ⚖ 0,9 g 🪙 plastic (dark blue)



1994 (type 724: sample for Metro Tashkent)
○ 25,0 mm ⬭ 2,2 mm ⚖ 0,9 g 🪙 plastic (dark blue, transparent)



1994 (round „M“, bold font)

🌀 25,0 mm 🌀 2,2 mm 🍷 0,9 g 🍷 plastic (light blue)



1994 (round „M“, bold font, *i* dots misaligned)

🌀 25,0 mm 🌀 2,2 mm 🍷 0,8 g 🍷 plastic (light blue)



1994 (round „M“, bold font rotated by 180°)

🌀 25,0 mm 🌀 2,2 mm 🍷 0,9 g 🍷 plastic (light blue)



1994 (type 725: edgy „M“)

🌀 25,0 mm 🌀 2,2 mm 🍷 0,9 g 🍷 plastic (light blue)



1994 (type 725: edgy „M“, coin alignment)

🌀 25,0 mm 🌀 2,2 mm 🍷 0,9 g 🍷 plastic (light blue)



1994 (type 726.5: edgy „M“, writing rotated by 180°)

🌀 25,0 mm 🌀 2,2 mm 🍷 0,8 g 🍷 plastic (light blue)



1994 (type 726.5: edgy „M“, „M“ rotated by 180°)

🌀 25,0 mm 🌀 2,3 mm 🍷 0,8 g 🍷 plastic (light blue)



1994 (type 726: Key Trust)

🌀 25,0 mm 🌀 2,2 mm 🍷 0,9 g 🍷 plastic (light blue)



1994 (type 726: Key Trust, „M“ rotated by 180°)

🌀 25,0 mm 🌀 2,2 mm 🍷 0,9 g 🗑️ plastic (light blue)



1994 (type 726.2: Spectr Trust)

🌀 25,0 mm 🌀 2,2 mm 🍷 0,8 g 🗑️ plastic (light blue)



1994 (type 726.4: Spectr Trust, „M“ rotated by 180°)

🌀 25,0 mm 🌀 2,2 mm 🍷 0,9 g 🗑️ plastic (light blue)



1994 (type 727: Spectr Trust, without „M“)

🌀 25,0 mm 🌀 2,2 mm 🍷 0,9 g 🗑️ plastic (light blue)



1994 (type 728: Olbi Ukraina, round „M“)

🌀 25,0 mm 🌀 2,2 mm 🍷 0,8 g 🗑️ plastic (light blue)



1994 (type 728: Olbi Ukraina, round „M“, coin alignment)

🌀 25,0 mm 🌀 2,2 mm 🍷 0,9 g 🗑️ plastic (light blue)



1994 (type 726.1: Olbi Ukraina, edgy „M“)

🌀 25,0 mm 🌀 2,2 mm 🍷 0,8 g 🗑️ plastic (light blue)



1994 (type 726.1: Olbi Ukraina, edgy „M“ rotated)

🌀 25,0 mm 🌀 2,2 mm 🍷 0,9 g 🗑️ plastic (light blue)



1994 (type 726.1: Olbi Ukraina, edgy „M“)
25,0 mm 2,4 mm 0,9 g plastic (orange)



1994 (type 726.1: Olbi Ukraina, edgy „M“)
25,0 mm 2,4 mm 0,9 g plastic (red)



2000 (type 729: chestnut leaf)
25,0 mm 2,2 mm 0,9 g plastic (dark blue)



2000 (type 729: chestnut leaf)
25,0 mm 2,2 mm 0,8 g plastic (blue)



2000 (type 729: chestnut leaf)
25,0 mm 2,2 mm 0,9 g plastic (light blue)



2000 (type 729: chestnut leaf)
25,0 mm 2,2 mm 0,9 g plastic (blue grey)



2000 (type 729: chestnut leaf)
25,0 mm 2,2 mm 0,8 g plastic (dark green)



2000 (type 729: chestnut leaf)
25,0 mm 2,2 mm 0,9 g plastic (green)



2003 (type 730: logo of Kiev Metro)

🌀 25,0 mm 🌀 2,2 mm 🍷 0,8 g 🗑️ plastic (dark blue)



2003 (type 730: logo of Kiev Metro)

🌀 25,0 mm 🌀 2,2 mm 🍷 0,8 g 🗑️ plastic (blue)



2003 (type 730b: logo of Kiev Metro)

🌀 25,0 mm 🌀 2,2 mm 🍷 0,8 g 🗑️ plastic (light blue)



2003 (type 730: logo of Kiev Metro)

🌀 25,0 mm 🌀 2,2 mm 🍷 0,9 g 🗑️ plastic (blue green)



2003 (type 730: logo of Kiev Metro)

🌀 25,0 mm 🌀 2,2 mm 🍷 0,9 g 🗑️ plastic (dark green)



2003 (type 730: logo of Kiev Metro)

🌀 25,0 mm 🌀 2,2 mm 🍷 0,8 g 🗑️ plastic (green)



2003 (type 730a: logo of Kiev Metro)

🌀 25,0 mm 🌀 2,2 mm 🍷 0,9 g 🗑️ plastic (light green)



2010 (type 732: 50 years of Kiev Metro – Arsenalnaya)

🌀 25,0 mm 🌀 2,2 mm 🍷 0,9 g 🗑️ plastic (dark blue)



2010 (type 732: 50 years of Kiev Metro – Arsenalnaya)
🌀 25,0 mm 🌀 2,2 mm 🌀 0,9 g 🌀 plastic (light blue)



2010 (type 735: 50 years of Kiev Metro – Voksalnaya)
🌀 25,0 mm 🌀 2,2 mm 🌀 0,9 g 🌀 plastic (dark blue)



2010 (type 735: 50 years of Kiev Metro – Voksalnaya)
🌀 25,0 mm 🌀 2,2 mm 🌀 0,9 g 🌀 plastic (light blue)



2010 (type 731: 50 years of Kiev Metro – Dnipro)
🌀 25,0 mm 🌀 2,2 mm 🌀 0,9 g 🌀 plastic (dark blue)



2010 (type 731: 50 years of Kiev Metro – Dnipro)
🌀 25,0 mm 🌀 2,2 mm 🌀 0,9 g 🌀 plastic (light blue)



2010 (type 733: 50 years of Kiev Metro – Khreshchatyk)
🌀 25,0 mm 🌀 2,2 mm 🌀 0,9 g 🌀 plastic (dark blue)



2010 (type 733: 50 years of Kiev Metro – Khreshchatyk)
🌀 25,0 mm 🌀 2,2 mm 🌀 0,9 g 🌀 plastic (light blue)



2010 (type 734: 50 years of Kiev Metro – University)
🌀 25,0 mm 🌀 2,2 mm 🌀 0,9 g 🌀 plastic (dark blue)



2010 (type 734: 50 years of Kiev Metro – University)
○ 25,0 mm ⬭ 2,2 mm ⚖ 0,9 g 🗑 plastic (light blue)



2017
○ 25,0 mm ⬭ 2,5 mm ⚖ 1,0 g 🗑 plastic (blue)

Кривий Ріг



1992
○ 25,0 mm ⬭ 2,1 mm ⚖ 0,8 g 🗑 plastic (orange, transparent)



1993
○ 24,8 mm ⬭ 2,3 mm ⚖ 0,8 g 🗑 plastic (orange, transparent)



1993 (coin alignment)
○ 24,8 mm ⬭ 2,3 mm ⚖ 0,8 g 🗑 plastic (orange, transparent)



1993
○ 24,8 mm ⬭ 2,3 mm ⚖ 0,8 g 🗑 plastic (orange)

???
○ 25,0 mm ⬭ 2,1 mm ⚖ 0,9 g 🗑 plastic (blue)

USA

Atlanta



1981
○ 16,5 mm ⬭ 1,2 mm ⚖ 1,9 g 🗑 brass



1994 (Peachtree Road Race)

22,7 mm 2,0 mm 6,4 g bronze



1994 (Super Bowl XXVIII)

22,7 mm 2,0 mm 6,6 g brass



1995 (Greatest Show on Earth)

22,6 mm 2,0 mm 6,7 g brass



1996 (Olympic Games)

22,7 mm 1,9 mm 6,4 g nickel plated brass



1996 (Paralympics)

22,7 mm 1,9 mm 6,5 g copper



2000 (Super Bowl XXXIV)

22,7 mm 1,9 mm 6,5 g copper



2010

22,7 mm 1,9 mm 6,5 g copper

Boston



1951

20,0 mm 2,2 mm 5,1 g brass



1987 (Southwest Corridor – Orange Line)

20,1 mm 2,1 mm 5,1 g steel



1988 to 2006 (normal font)
○ 20,0 mm ◌ 2,1 mm 🏺 5,0 g 🗡️ brass



1988 to 2006 (bold font)
○ 20,0 mm ◌ 2,1 mm 🏺 5,0 g 🗡️ brass



1992 (Sail Boston)
○ 20,0 mm ◌ 2,1 mm 🏺 5,0 g 🗡️ brass



2000 (Millenium token)
○ 20,2 mm ◌ 2,2 mm 🏺 5,1 g 🗡️ brass

Chicago



1924 to 1947 (CRT)
○ 22,8 mm ◌ 1,4 mm 🏺 3,7 g 🗡️ copper-nickel



1950 (coin alignment)
○ 16,4 mm ◌ 1,1 mm 🏺 1,7 g 🗡️ copper-nickel



1950 (coin alignment)
○ 16,4 mm ◌ 1,1 mm 🏺 1,7 g 🗡️ copper plated copper-nickel



1950er ?
○ 16,4 mm ◌ 1,1 mm 🏺 1,7 g 🗡️ copper-nickel



1957
○ 20,2 mm ◌ 1,2 mm 🏺 2,7 g 🗡️ brass

Los Angeles



1996 to 2019
○ 22,8 mm ◌ 1,3 mm 🏺 4,0 g 🗡️ bimetal



1996 to 2019

22,8 mm 1,3 mm 4,0 g bimetal

Miami



1990

22,8 mm 1,5 mm 4,4 g bimetal



1995 (Super Bowl XXIX)

22,8 mm 1,5 mm 4,5 g bimetal

New Jersey



1965 to 1971 (PATH)

22,1 mm 1,4 mm 3,9 g brass

New York



1939 to 1948

22,5 mm 1,8 mm 5,5 g white metal



1941 to 1948

23,5 mm 1,8 mm 5,3 g brass



1953 to 1970 (cut Y)

16,4 mm 1,2 mm 1,7 g brass



1953 to 1970 (uncut Y)

16,4 mm 1,1 mm 1,9 g brass

Token Pak 1953 to 1967



1966 to 1980 (Aqueduct Racetrack special fare token)

🌀 28,6 mm 🌀 2,3 mm 🏺 9,5 g 🌀 brass



1970 to 1980 (small Y)

🌀 22,8 mm 🌀 1,8 mm 🏺 4,7 g 🌀 brass



1970 to 1980 (large Y)

🌀 22,8 mm 🌀 1,8 mm 🏺 4,7 g 🌀 brass



1979 to 1980

🌀 22,8 mm 🌀 1,6 mm 🏺 4,8 g 🌀 brass



1980 to 1986

🌀 22,2 mm 🌀 1,4 mm 🏺 3,9 g 🌀 brass



1980 (Aqueduct Racetrack special fare token)

🌀 23,4 mm 🌀 1,4 mm 🏺 4,4 g 🌀 Stahl



1986 to 1989 (SJD)

○ 22,1 mm ◌ 1,4 mm ⚖️ 3,8 g 🪙 bimetal



1989 to 1995

○ 22,1 mm ◌ 1,4 mm ⚖️ 3,8 g 🪙 bimetal



1990 to 1992 (Archer Avenue Extension)

○ 22,1 mm ◌ 1,4 mm ⚖️ 3,8 g 🪙 bimetal



1995 to 2003

○ 20,0 mm ◌ 1,4 mm ⚖️ 3,2 g 🪙 brass

Philadelphia



1924 (PRT)

○ 16,4 mm ◌ 1,1 mm ⚖️ 1,7 g 🪙 copper-nickel



1924 (PRT for school children)

○ 22,8 mm ◌ 1,4 mm ⚖️ 4,1 g 🪙 brass



1936 (PRT, Bridge Line)

○ 22,4 mm ◌ 1,8 mm ⚖️ 5,0 g 🪙 brass



1942 (PTC)

○ 16,4 mm ◌ 1,2 mm ⚖️ 1,7 g 🪙 white metal



1942 (PTC)

○ 16,4 mm ◌ 1,2 mm ⚖️ 1,7 g 🪙 copper-plated



1942 (PTC)

○ 16,4 mm ◌ 1,2 mm ⚖️ 1,7 g 🪙 brass-plated



1942 (PTC for school children)

○ 22,8 mm ⬭ 1,4 mm ⚖️ 4,1 g 🪙 brass



1940er (PTC, Bridge Line)

○ 22,4 mm ⬭ 1,6 mm ⚖️ 4,6 g 🪙 brass



1949 (PTC, „ONE CASH FARE“)

○ 20,0 mm ⬭ 1,4 mm ⚖️ 3,2 g 🪙 brass



1949 (PTC, „ONE FARE“)

○ 20,0 mm ⬭ 1,4 mm ⚖️ 3,3 g 🪙 brass



1949 (PTC, without legend)

○ 20,0 mm ⬭ 1,4 mm ⚖️ 3,3 g 🪙 brass



1949 (PTC, without legend, short wing)

○ 20,0 mm ⬭ 1,4 mm ⚖️ 3,3 g 🪙 brass



1952 (PTC)

○ 16,4 mm ⬭ 1,2 mm ⚖️ 1,9 g 🪙 brass



1950er (PTC, Bridge Line)

○ 22,4 mm ⬭ 1,6 mm ⚖️ 4,8 g 🪙 copper-nickel



1975 to 1990 (SEPTA)

○ 22,2 mm ⬭ 1,6 mm ⚖️ 5,1 g 🪙 brass



1975 (SEPTA School Token)

○ 20,0 mm ⬭ 1,3 mm ⚖️ 3,2 g 🪙 copper-nickel



1976 (SEPTA, 200 years independence)
 22,4 mm 1,8 mm 5,0 g brass



1979 (SEPTA)
 20,0 mm 1,4 mm 3,1 g brass



1990 to 2018 (SEPTA)
 22,2 mm 1,4 mm 4,0 g copper-nickel, bronze strip



1994 to 2018 (SEPTA)
 20,0 mm 1,5 mm 3,4 g bronze, copper-nickel strip

Washington



1973
 22,8 mm 1,4 mm 3,5 g copper-nickel



1973
 19,8 mm 1,4 mm 2,2 g brass



1982
 19,8 mm 1,4 mm 2,9 g copper-nickel



1993
 19,8 mm 1,4 mm 2,9 g copper-nickel

Uzbekistan

Taschkent



1992 (Variante A)
 24,0 mm 1,2 mm 3,7 g brass



1992 (variant B)

○ 24,0 mm ○ 1,2 mm ⚖ 3,8 g 🏷️ brass



1992 (variant C)

○ 24,0 mm ○ 1,2 mm ⚖ 3,9 g 🏷️ brass



1995 (type 1: thin and wide „M“, without separator, logo not striped)

○ 25,0 mm ○ 2,4 mm ⚖ 1,1 g 🏷️ plastic (blue)



1995 (type 1: thin and wide „M“, without separator, logo not striped)

○ 25,0 mm ○ 2,4 mm ⚖ 1,1 g 🏷️ plastic (blue green)



1995 (type 1: thin and wide „M“, without separator, logo not striped)

○ 25,0 mm ○ 2,4 mm ⚖ 1,1 g 🏷️ plastic (light blue)



1995 (type 2a: thin „M“, with separator)

○ 24,8 mm ○ 2,3 mm ⚖ 0,8 g 🏷️ plastic (blue)



1995 (type 2a: thin and rotated „M“, with separator)

○ 24,8 mm ○ 2,3 mm ⚖ 0,9 g 🏷️ plastic (blue)



1995 (type 2a: thin „M“, with separator, reverse rotated)

○ 24,8 mm ○ 2,2 mm ⚖ 0,8 g 🏷️ plastic (blue)



1995 (type 2b: thin „M“, without separator)

🌀 24,8 mm 🌀 2,3 mm 🏊 0,8 g 🗑 plastic (blue)



1995 (type 3a: bold „M“, with separator, logo striped)

🌀 25,0 mm 🌀 2,4 mm 🏊 0,9 g 🗑 plastic (blue)



1995 (type 3a: bold „M“, with separator, logo striped)

🌀 25,0 mm 🌀 2,4 mm 🏊 0,9 g 🗑 plastic (dark blue)



1995 (type 3a: bold „M“, with separator, logo striped)

🌀 25,0 mm 🌀 2,4 mm 🏊 0,9 g 🗑 plastic (blue green)



1995 (type 3b: bold „M“, without separator, logo striped)

🌀 25,0 mm 🌀 2,4 mm 🏊 0,9 g 🗑 plastic (blue)



1995 (type 4⁴⁴⁴: bold „M“, with separator, logo not striped, coin alignment)

🌀 24,8 mm 🌀 2,4 mm 🏊 0,8 g 🗑 plastic (blue)



to 2017 (for pensioners)

🌀 25,8 mm 🌀 2,2 mm 🏊 1,1 g 🗑 plastic (yellow, red)



2017 (for pensioners)



🌀 25,0 mm 🌀 2,0 mm 🏊 2,4 g 🗑 aluminium

Venezuela

Valencia






2006 (blank reverse)

 30,0 mm  3,0 mm  2,4 g  plastic (white, blue, red)



2006 (with serial number)

 30,0 mm  3,0 mm  2,7 g  plastic (white, blue, red)